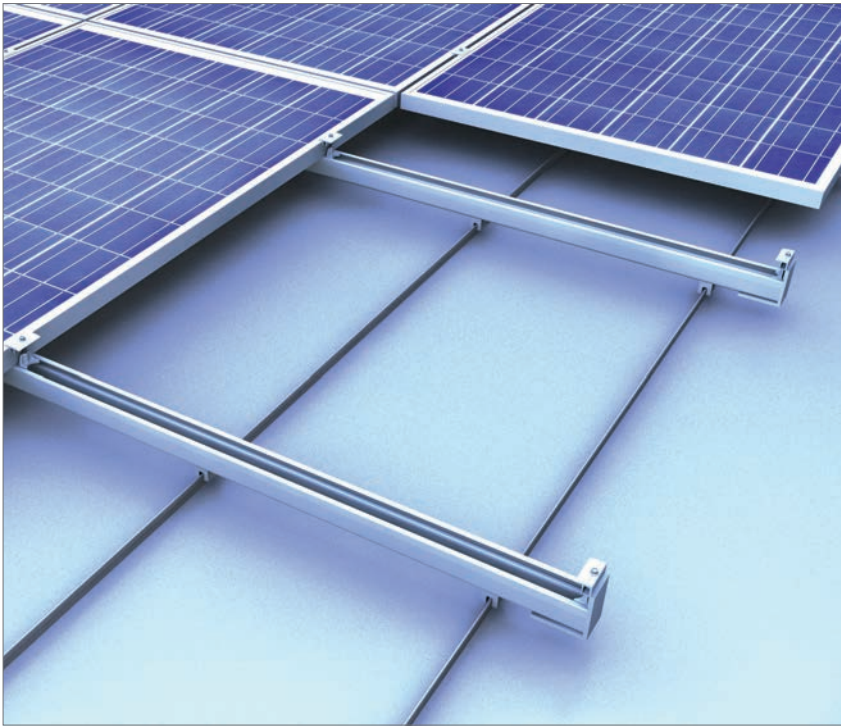


# Seamed metal roof | clamping system



Single-rail clamping system with modules installed in portrait

## Your benefits

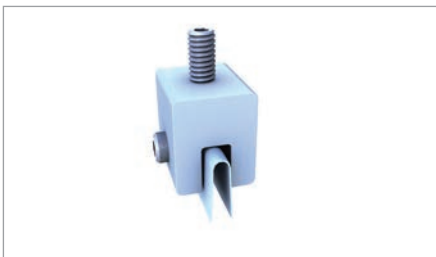
- Only a handful of components – entirely pre-assembled
- Quick mounting from above
- The C-rail also acts as a cable channel
- Only three clamps for all frame heights
- Secure, stable and durable
- For all conventional seamed metal and profile sheet roofs
- Also suitable for standing seam roofs made of copper
- Excellent rear ventilation
- Simple, Eurocode-compliant layout with our Solar-Planit online tool



## Perfect for seamed metal roofs

Be it a standing seam roof, a rounded seam roof or a profiled sheet roof, such as a Zambelli RibRoof or Domico GBS: Our novotegra clamping system, which has proven itself over years of service, ensures the reliable, stable and secure attachment of your photovoltaic installation on any seamed metal roof. With the roof seam clamping technology, our mounting system is attached directly to the roof seam: The load is transferred centric in to the seam. Our clamping system for seamed metal roofs can also be used on standing seam roofs made of copper. They have a high production quality and comprise durable and corrosion-resistant components – perfect for the individual requirements of the photovoltaic installation on site. Our clamping system is quick and easy to fix to the seamed

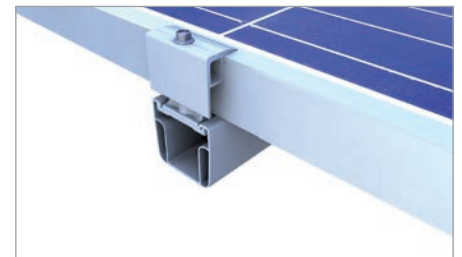
metal roof. It comprises only three components: the C-rails, the seamed metal and the module clamps. The modules are installed vertically. The module clamps are available in three sizes – and in either blank aluminium or black. Mounting is done comfortably from above. The rails can also be extended with connectors as needed. Our mounting system for seamed metal roofs provides excellent rear ventilation of the modules and – with decent system components and homogenous module fields – attractive aesthetics.



Clamp with saddle for copper standing seam roofs



C-rail connection directly on the seam clamp

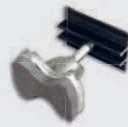


Flush closure end clamp with C-rail

## Clamping system



### Middle clamp or end clamp



Item no. 03-000302



Item no. 03-000299



Item no. 03-000301



Item no. 03-000298

## Attachment system

### Connector



Item no. 03-000925

### Rail



Item no. 03-000291

### Seam clamp



Item no. 03-000219

### VA saddle (only for copper roofs)



Item no. 03-000338



Have you already seen it?

To our novotegra YouTube channel.  
There you will find helpful videos for installation assistance.

BayWa r.e. Solar Energy Systems GmbH | Eisenbahnstrasse 150 | 72072 Tuebingen, Germany  
Phone +49 7071 98987-0, Fax +49 7071 98987-10, solarenergysystems@baywa-re.com  
www.baywa-re.com, solar-distribution.baywa-re.de, novotegra.baywa-re.com